



Advantages of the LFC biodigester



Convenient

Digest food waste on site in 24 hours with no odor or noise.



Cost Savings

Significantly reduce cost to dispose of and manage waste food.



Compliance

Dispose of your waste without sending it to the landfill to comply with environmental mandates and laws



Cleanliness

Eliminate smells, mess, and pests from your trash bins.



Control

View statistics on usage, diagnostics, and service schedules remotely with the LFC Cloud.

About

Power Knot

Power Knot's mission is to provide safe and economically sound solutions for commercial, industrial, and military customers seeking to improve and to make a positive impact on their environment.

Our technologies are proven and available today, have been in reliable use for many years, and offer a payback period typically of less than two years.



Convert organic waste into water

Food waste biodigester

Power Knot



Contact us to
learn more

www.powerknot.com

+1-408-889-8433

info@powerknot.com

From waste to water

The LFC® biodigester is a fully enclosed, automatic stainless steel machine that digests food waste within 24 hours. This machine is typically installed in a commercial kitchen and reduces the expense, inconvenience, mess, and carbon footprint of disposing of food waste that would otherwise be hauled to a landfill.

The LFC biodigester can digest anything a human can eat, including raw and cooked foods such as fruits, vegetables, meat, fish, and carbohydrates. It operates 24 hours a day, seven days a week with minimal impact on utilities.

Power Knot has eight different sized biodigesters that digest from 9 kg (20 lb) per day to 3000 kg (6600 lb) per day of waste food. With many hundreds of installations globally, the LFC biodigester has proven to be reliable, safe, and cost effective.



Pictured: LFC-200 biodigester

Example: LFC-100 biodigester

Recommended for a facility serving 300 meals per day. Each meal produces an average of 300g of food waste per day.

Nominal capacity per day

70–600 kg (150–1320 lb)

Dimensions

115 x 76 x 112 cm (45 x 30 x 44 in)

Set up required

Internet for LFC Cloud reporting and connection, water inflow, waste outflow, flat surface, and single phase power supply



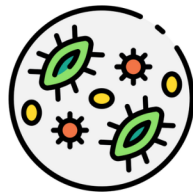
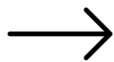
See what an LFC-100 biodigester would look like in your facility

How it works



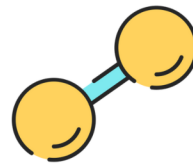
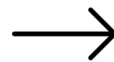
Organic Waste

Organic waste segregated from other types of waste and is placed into the LFC biodigester.



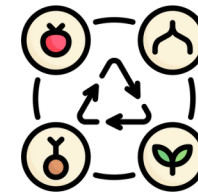
Microorganisms

A special blend of microorganisms from Powerzymes are housed in Powerchips.



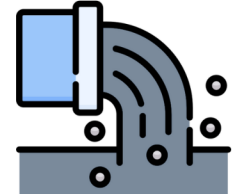
Oxygen

Paddles in the LFC biodigester turn to add oxygen and begin aerobic digestion.



Digestion

Microorganisms eat the food waste and convert it into water.



Output

Discharged into the sewage system.